

NAME	DATE	REVISIONS	MOLD No:	2036	A3	DRUJBA Glassworks S.A. A Member of Yioula Group	
			FINISH No:	020			
			PROCESS	BB	MACHINE	DG 5 1/2" BOTTLE:	
			TYPE	OW	SLIP ANGLE	°	
			CAP. BRIMF.	346.5ml±6.6	DIAM.	Ø60.40mm ±1.30	
			CAP. FILLPT.	330ml±6.6	HEIGHT	226.9mm ±1.60	
			FILL LINE	47mm	DRAWN	HRISTOVA	
			WEIGHT	220g	CHECKED	DIMITROV	
			COLOR		CONFIRMED	P.TENTA	
						CAT.No & DWG No:	
						2036020	
						DATE	27/10/2004
						SHEET:1/1	SCALE: 1:1

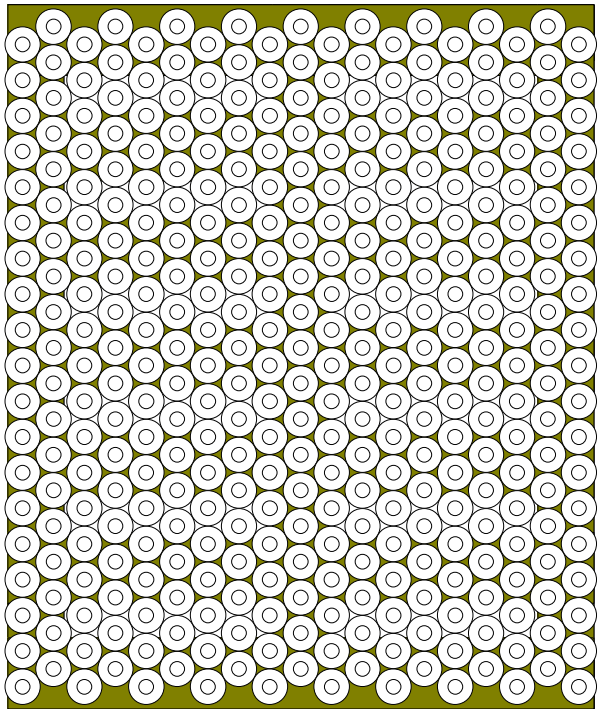


33cl BEER code2036020-pads

Date Printed : 23/4/2014

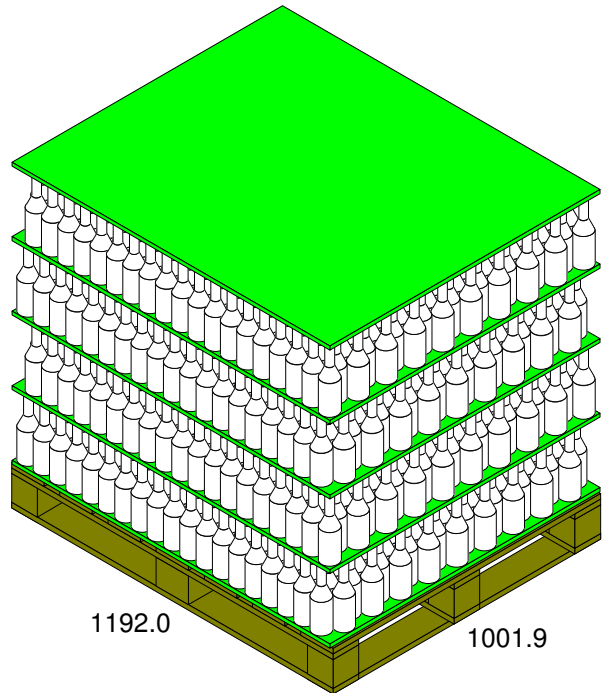
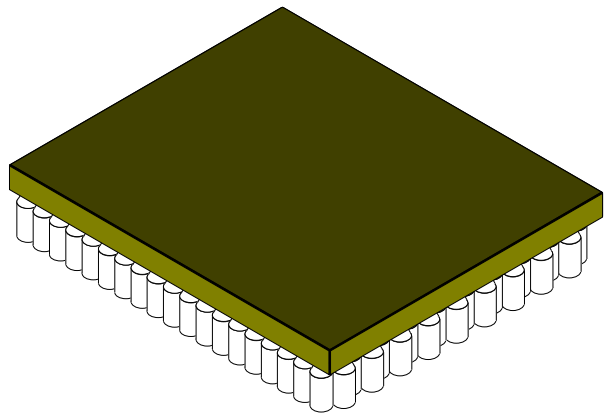
Last Saved : 23/4/2014

BEER



1001.9

1192.0



1292.9

UK WOODEN PALLET 992.0x1192.0x147.0

	Bottle (ID)	Bottle (OD)	UnitLoad (Incl. Pal)
Ln:	60.40 mm	60.40 mm	1001.9 mm
Wd:	60.40 mm	60.40 mm	1192.0 mm
Ht:	226.90 mm	226.90 mm	1292.9 mm
Gr:		220.00 g	419.1 kg
Cube:	0.41 l	0.41 l	1.5 m3
		Height Vert	
Prod.Vol:	0.00 l		0.00 m3
Bottle:			1805
Area Efficiency:			111.4 %
Cubic Efficiency:			46.5 %
Prod.Eff:	0.0 %	0.0 %	0.0 %
Cases per layer:			361
Layers/load:			5
Pattern:			Staggered
Max UL High:			4
Clamp Direction:			N/A

Notes: THE WOODEN PALLET IN USE IS SPECIALLY HEAT TREATED. UK WOODEN PALLET. PLASTIC PADS.