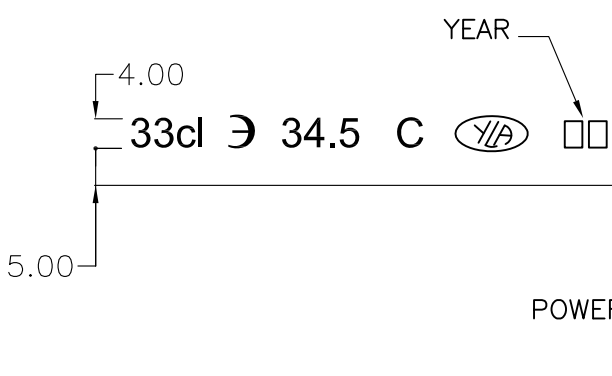
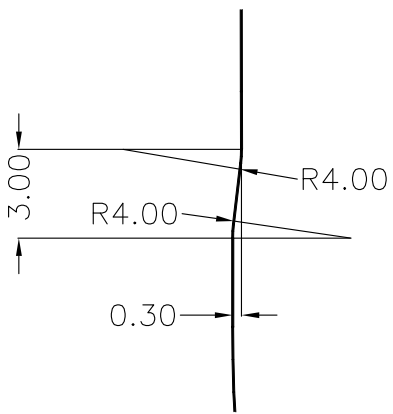
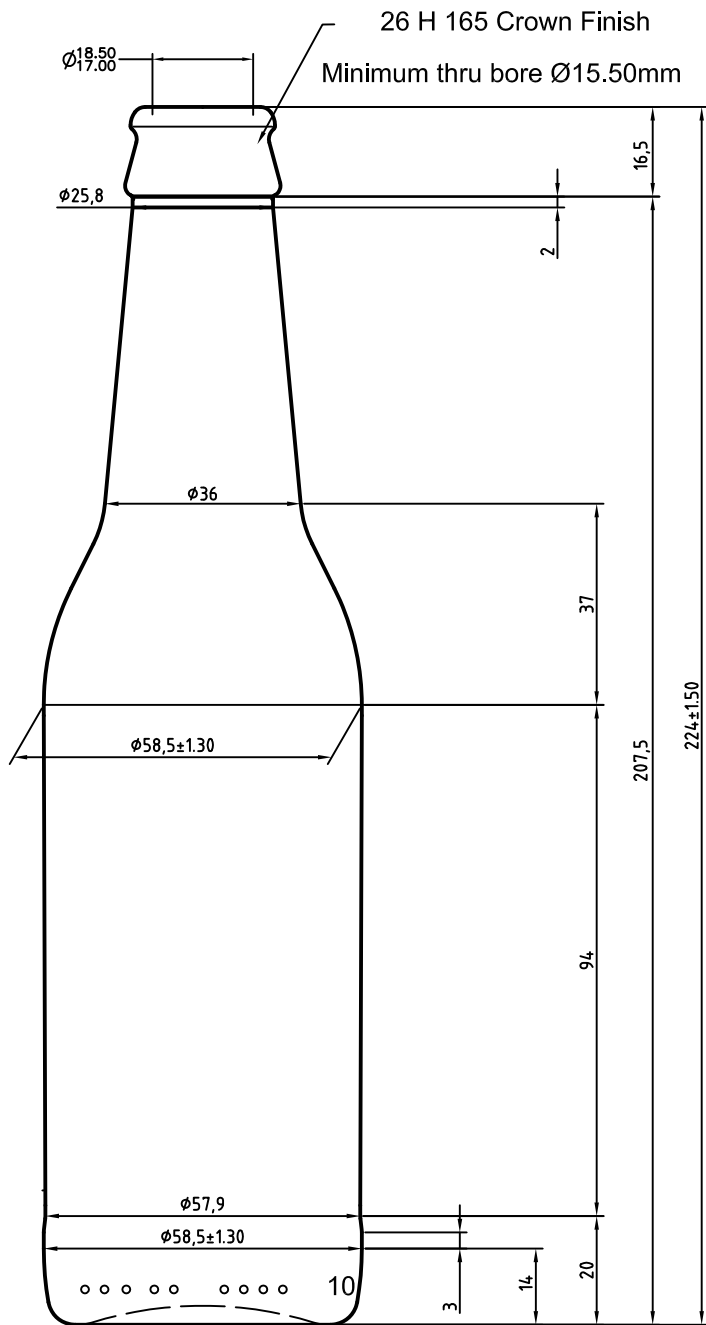


DETAIL A
SCALE 4:1



NAME	DATE	REVISIONS	MOLD No:	2044			DRUJBA Glassworks S.A.	
			FINISH No:	207			A Member of Yioula Group	
			PROCESS	NNPB	MACHINE	DG 5 1/2"	BOTTLE:	
			TYPE	OW	TIPP. ANGLE	°	PIVO OW	
			CAP. BRIMF.	345ml±6.6	DIAM.	Ø58.50mm ±1.30	CAT.No & DWG No:	
			CAP. FILLPT.	330ml±6.6	HEIGHT	224.00mm ±1.50	2044207	
			FILL LINE	43mm	DRAWN	HRISTOVA	DATE	19/19/2005
			WEIGHT	195g	CHECKED	DIMITROV	SHEET:1/1	SCALE: 1:1
			COLOR		CONFIRMED	H.PIK		



Bulgaria, 1220 Sofia, 1 Prof. I.Gheorgov Str.
tel.: +359 2 92 16 551 fax: 359 2 931 12 47



DRUJBA Glassworks S.A.
A Member of Yioula Group

TYPE:

PIVO OW

PROD. CODE: 2044207

TECHNICAL DESCRIPTION:

- ❖ F. P. capacity 330±6.5ml
- ❖ Brimful capacity 345±6.5ml
- ❖ Weight 195 g
- ❖ Finish FIN-207
- ❖ Color: ,

OPERATIONAL LIMITS:

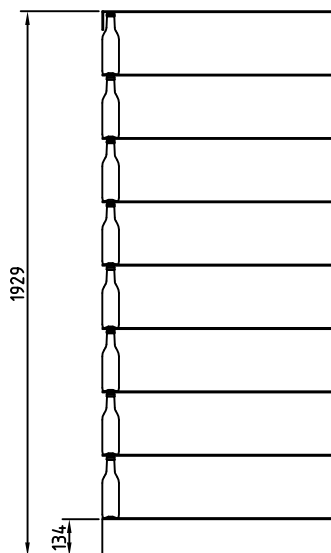
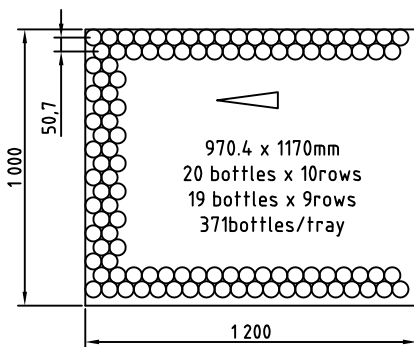
- ❖ Thermal shock 50°C
- ❖ Min. pressure 12 kg/cm²

TOLERANCES [mm]:

- ❖ Vert. deviation ± 2.6
- ❖ Diameter ± 1.3
- ❖ Height ± 1.5

COATING TYPE:

- ❖ Hot Yes
- ❖ Cold Yes



PALLET - LOADING PATTERN

- ❖ Number of trays 8 Pcs
- ❖ Bottles per pallet 2968Pcs
- ❖ Pallet weight 609 kg
- ❖ Pallet dimension 1200x1000 mm