


Other dimensions and information as DWENS sheets GS-217 and GS-220

 YIOULA S.A. GLASSWORKS	Mold No.	72132	Capacity	210(±3.5)cc
	Bottle	OUZO 0.2L	Fill line	
DWG No. 72132/1	Customer		Weight	145(±6.5)gr
Date: 30/12/03	Machine	DG 4 1/4"	Finish	28 PP STD
Scale: 1:1			Color	FLINT

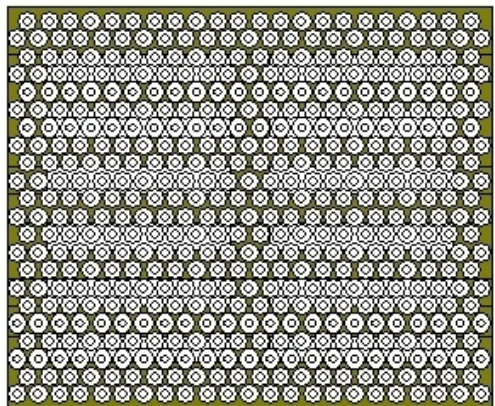


YLA CODE:72132

Date Printed : 2/6/2010

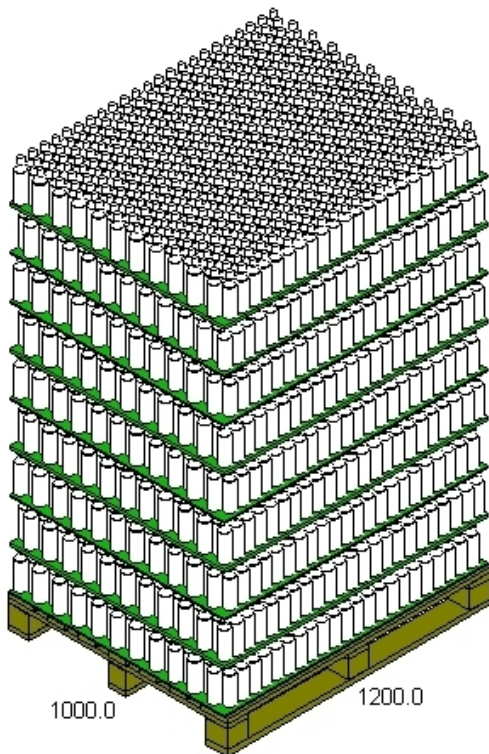
Last Saved : 2/6/2010

Common_Spirit_20cl



1200.0

1000.0



1974.1

1000.0

1200.0

E(1200 X 1000) 1200.0x1000.0x145.0

	Bottle (ID)	Bottle (OD)	UnitLoad (Incl. Pal)
Ln:	51.20 mm	51.20 mm	1200.0 mm
Wd:	51.20 mm	51.20 mm	1000.0 mm
Ht:	181.50 mm	181.50 mm	1974.1 mm
Grs:		145.00 g	742.8 kg
Cube:	0.30 l	0.30 l	2.4 m3
		Height Vert	
Prod.Vol:	0.00 l		0.00 m3
Bottle:			4950
Area Efficiency:			108.1 %
Cubic Efficiency:			64.3 %
Prod.Eff:	0.0 %	0.0 %	0.0 %
Cases per layer:			495
Layers/load:			10
Pattern:			Staggered
Max UL High:			8
Clamp Direction:			N/A

Notes: Wooden pallet(1200x1000x145)_ Bottles per layer:((11x23)+(11x22)=495_No of layers:10_ Bottles per pallet:4950Pcs_ Plastic Pads